

Introducing  
Predator and Raptor

## Advancing Servo Gear Technology

The next generation of inline gearheads has arrived! CGI, Inc.'s new Predator and Raptor Gearheads provide the technology and reliability you need for even the most critical motion control requirements.

Our new optimized gear design and advanced materials ensure exceptional precision, stiffness, torque density and quiet operation—all at a competitive price.

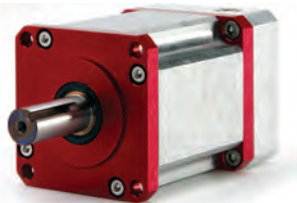
**Get the competitive advantage.**

Choose CGI, Inc., the trusted name in mechanical motion control solutions.

### ***Predator***<sup>™</sup>

**New Predator** – Advanced design

- New, optimized gear tooth design
- Single-piece construction utilized throughout
- Advanced technology materials and treatments
- Fully sealed modular design
- Quick and easy motor mounting



### **RAPTOR**<sup>™</sup>

**New Raptor** – Standard with all the options

- Fully sealed to IP65
- Captive input pinion with dual screw clamp
- Oversize bearings
- Mounting in any direction
- NEMA and Metric standard frames
- Extended Pilot frame also available



Quality at Every Turn

800.568.GEAR (4327) • [www.cgimotion.com](http://www.cgimotion.com)